

VUE

FOUR



316 Lillooet Hts.

Features:

- Four Bedrooms with Private Master Wing
- Four Bathrooms with "Spa" like Ensuite
- Gourmet Chef's Kitchen with Quartz Counter Tops
- Media Room, Climate controlled Wine Room and Exercise Area with built-in Bar
- Two Storey Foyer and Vaulted Ceilings
- Walk out West Facing Yard with Panoramic Ocean and City Views, Terraced Deck with built-in Fireplace
- Professional landscape design with custom Water Feature and Multi-Zone Sprinkler System



VUEBYABSTRACT.COM

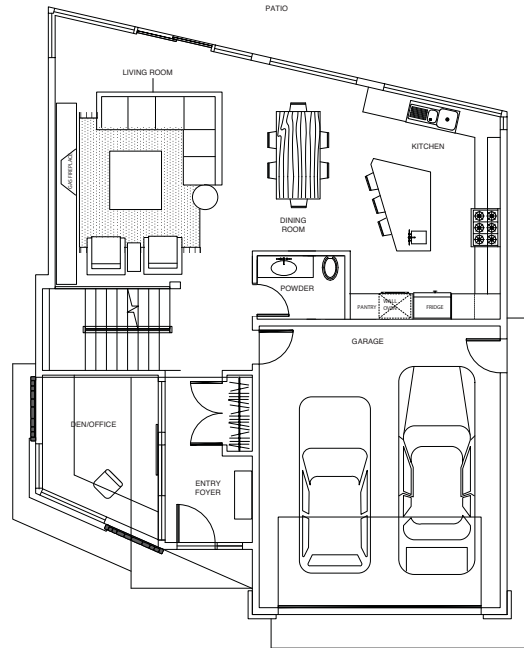
 **Abstract**
DEVELOPMENTS INC.
National Award Winning - Custom Home Builder
www.abstractdevelopments.com



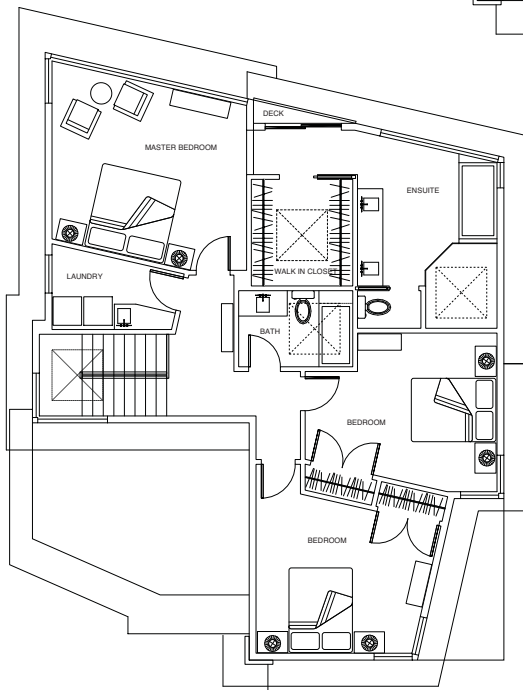
316 Lillooet Hts.

FOUR

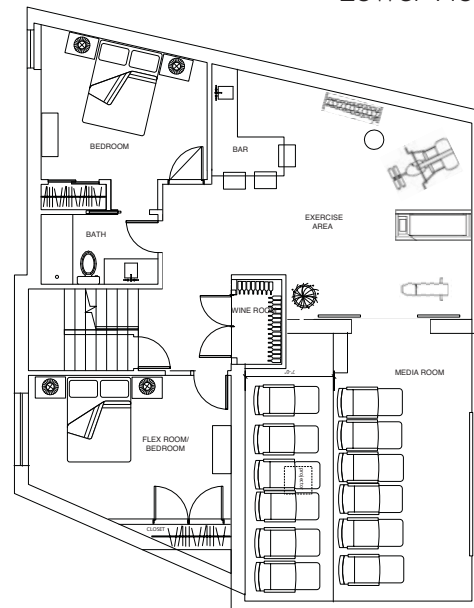
Main Floor



Upper Floor



Lower Floor



Total Living Area 3,779 sq ft

Main 1,095 sq ft

Upper 1,147 sq ft

Lower 1,537 sq ft

Garage 442 sq ft

Decks 656 sq ft

Abstract Developments Inc. reserves the right to make changes in order to improve the development. E&O



Mark Lawless Ph: 250.744.3301

www.marklawless.com