

VUE

THREE



320 Lillooet Hts.

Features:

- Four Bedrooms with Private Master Wing
- Four Bathrooms with "Spa" like Ensuite
- Gourmet Chef's Kitchen with Quartz Counter Tops
- Media Room, Climate controlled Wine Room and Exercise Area with built-in Bar
- Grand Foyer and Vaulted Ceilings
- Walk out West Facing Yard with Panoramic Ocean and City Views, Terraced Deck with built-in Fireplace
- Professional landscape design with custom Water Feature and Multi-Zone Sprinkler System



VUEBYABSTRACT.COM

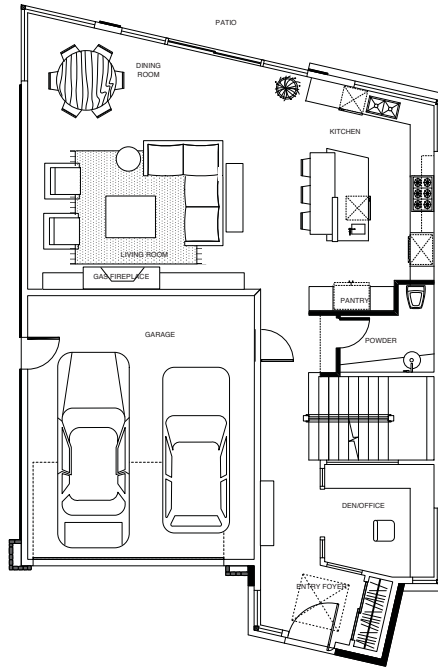
 **Abstract**
DEVELOPMENTS INC.
National Award Winning - Custom Home Builder
www.abstractdevelopments.com



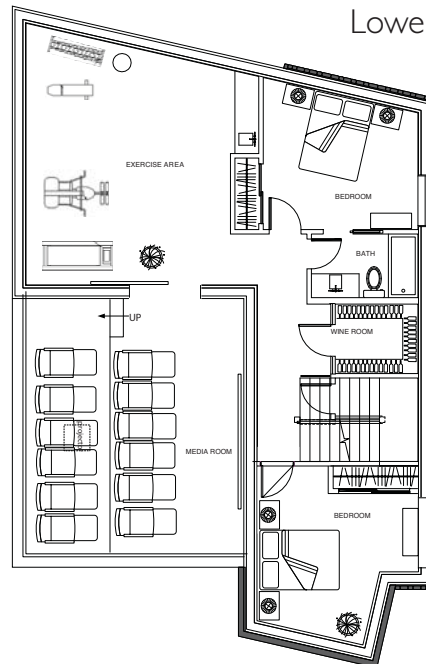
320 Lillooet Hts.

THREE

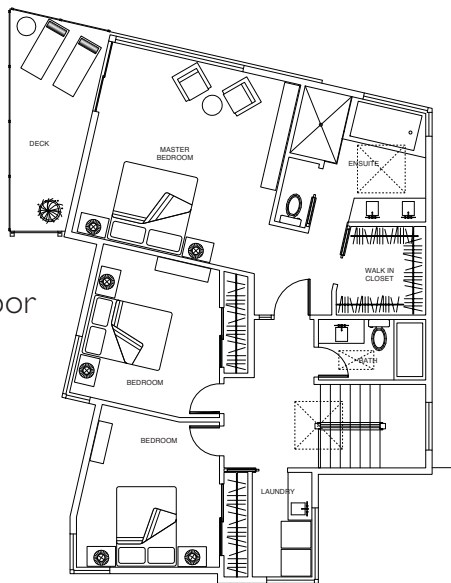
Main Floor



Lower Floor



Upper Floor



Total Living Area	4,056 sq ft
Main	1,222 sq ft
Upper	1,171 sq ft
Lower	1,663 sq ft
Garage	441 sq ft
Decks	703 sq ft

Abstract Developments Inc. reserves the right to make changes in order to improve the development. E&O



Mark Lawless Ph: 250.744.3301
www.marklawless.com