



BELLEWOOD | PARK





*It's
something
we understand
intuitively.*



Nature is our second home. It was, perhaps, even our first from the time long ago before we built them ourselves. We feel that instinctively when we stand in the pure, green silence of a park – that we are somehow closer to our nature in nature.

It's a measurable truth that we relax in the presence of trees. In Japan, the practice of taking short walks in the forest called *shinrin-yoku* is documented to improve quality of life. The pulse slows. Stress slips away. Studies show we actually live longer when we live a life filled with nature.

What if the feeling of being at home in nature was closer to home? What if the distance travelled for a moment in the woods is just a few steps from living room to terrace? Where leaves flutter in the wind. And roots run deep.

Be at home in nature.

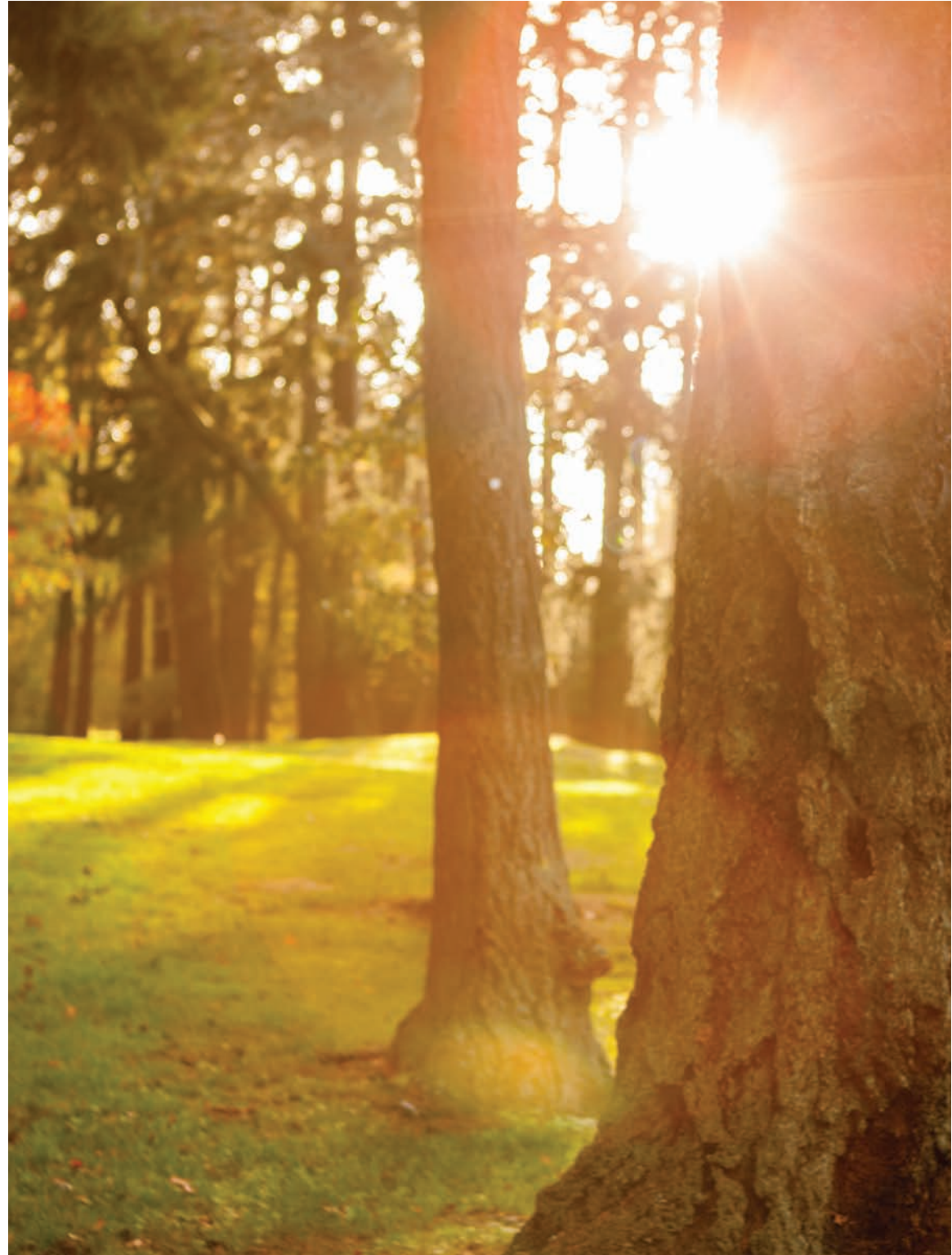
At home.

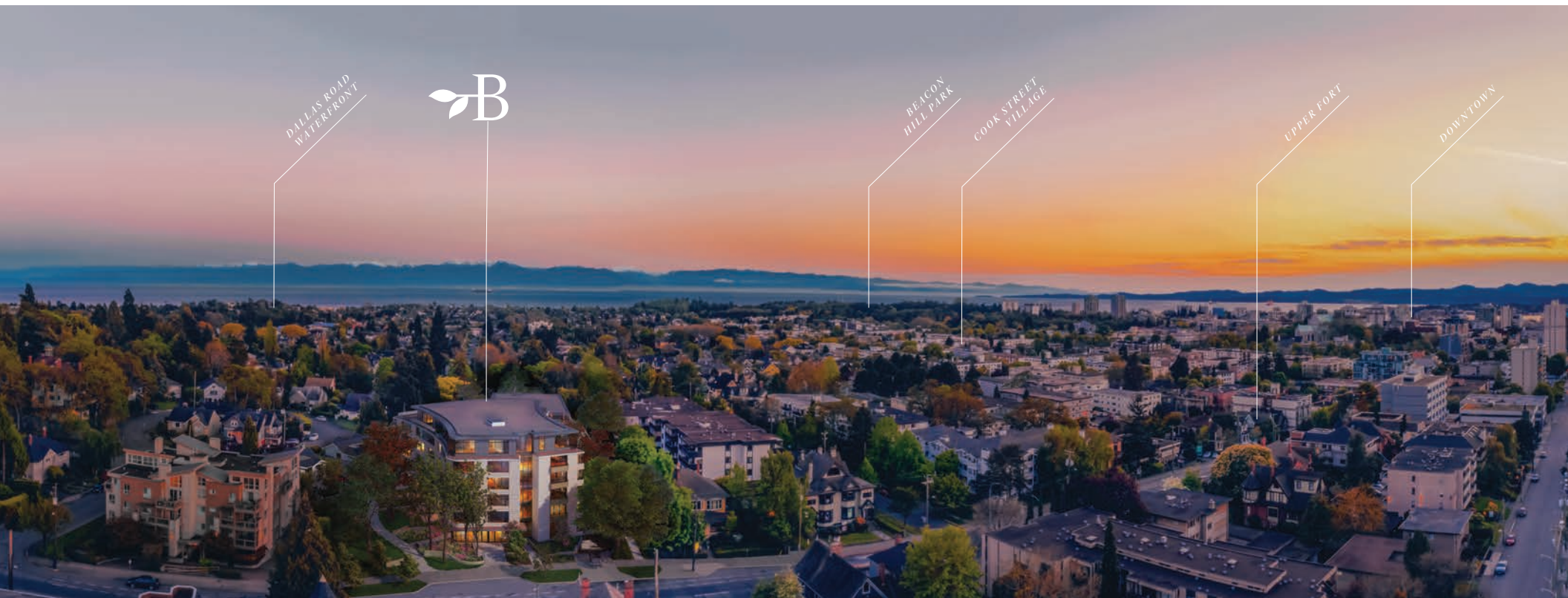
Live Fully Now.

Bellewood Park offers a unique opportunity to experience nature—a place from which one can engage with their senses and have everything Victoria has to offer so close.

A life among the trees

Bellewood Park sits in a truly natural setting, nestled amongst large heritage Garry oaks on nearly two acres of park land. Its design is respectful of the site and surroundings and creates a harmony and balance that makes it feel as if it had always been there. Timeless architecture by Cascadia Architects features a stunning exterior façade of custom tumbled brick and curved architectural lines that follow the natural rhythm created by the surrounding trees, redefining the standard for modern Victoria communities.





DALLAS ROAD
WATERFRONT



BEACON
HILL PARK

COOK STREET
VILLAGE

UPPER FORT

DOWNTOWN

Alive with nature and culture

Everything you need is close by. Upper Fort shops and restaurants are located practically in your own backyard. And when you live at the centre of it all, it's simpler to live life to its fullest. Just step out your front door and you're there.

UPPER *fort*
4 MIN. WALK

DALLAS ROAD *waterfront*
20 MIN. WALK

DOWNTOWN *victoria*
13 MIN. WALK

COOK STREET *village*
14 MIN. WALK

BEACON HILL *park*
20 MIN. WALK



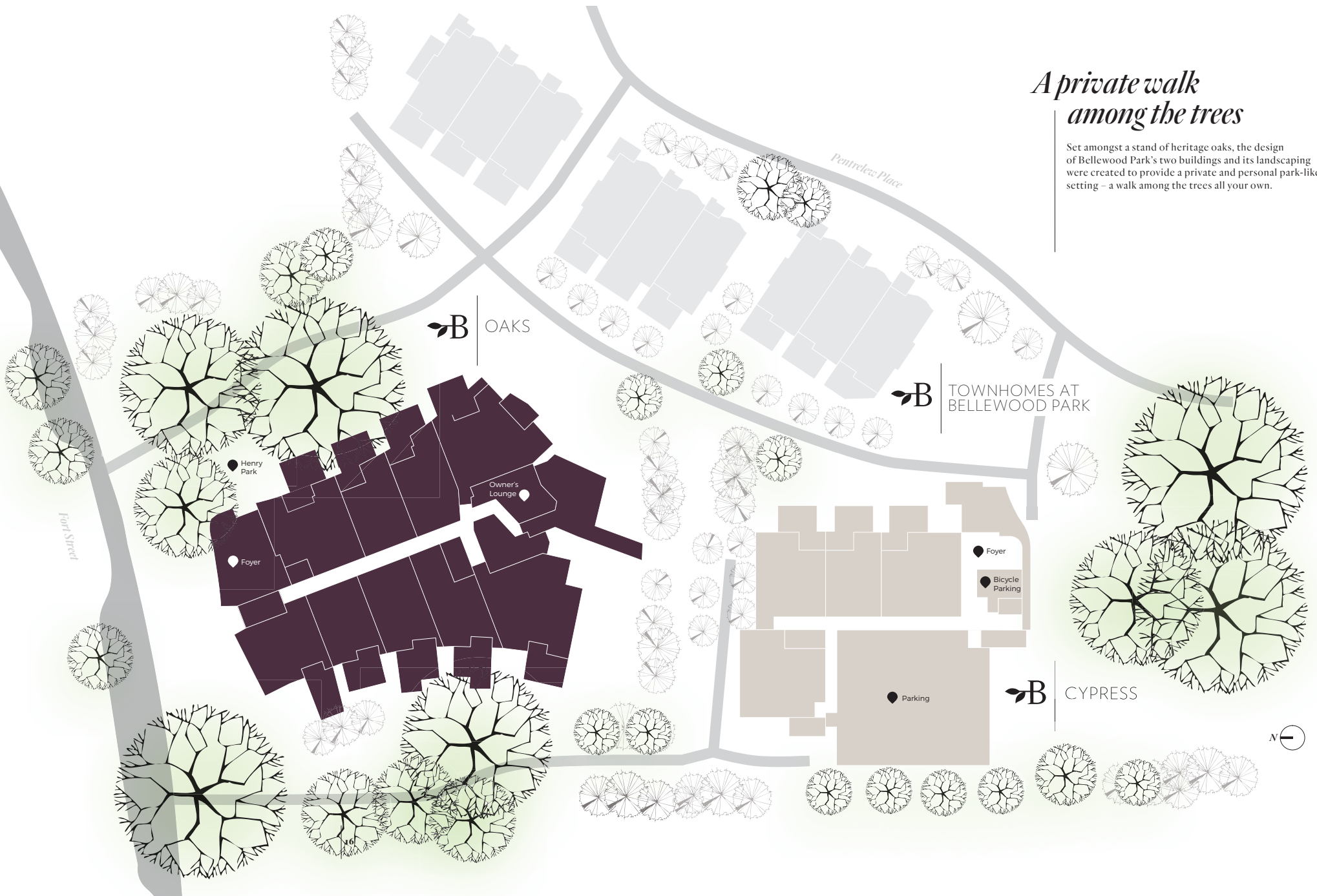
A natural heritage preserved

The towering 100 year old Garry oak trees at Bellewood Park were preserved as part of its site plan. A canopy of this depth and richness can only be created by the passing of decades, offering an unparalleled natural setting.

STUNNING EXTERIOR FAÇADE *of*
CUSTOM TUMBLED BRICK.

A private walk among the trees

Set amongst a stand of heritage oaks, the design of Bellewood Park's two buildings and its landscaping were created to provide a private and personal park-like setting – a walk among the trees all your own.



At home in nature

Naturally, the setting at Bellewood Park sets the stage for the way you'll live there. Wood tones in Oak or Walnut run throughout the spaces offering a choice of light or dark palettes. Overheight nine foot ceilings open up the spaces to the light that floods in from large, triple-glazed windows.

Kitchens feature appliances by Wolf®, Fisher-Paykel® and Blomberg® with recessed under-cabinet task lighting and Kuzco® modern pendant lighting above islands. Views take in the park-like setting, creating an almost seamless flow of nature from outside to inside.



NATURAL FLAT-PANEL WOODGRAIN *with*
WHITE PAINTED CABINETRY



CUSTOM MILLWORK WARMS THE *room*
WITH NATURAL MATERIALS.

WIDE-PLANK FLOORING *unites*
THE SPACE.



THE LUXURY *of*
SPA-INSPIRED BATHS

*Live a life
without compromise*

The Penthouse and Sub Penthouse homes at Bellewood Park offer an unparalleled level of life well lived. Soaring ten and eleven foot ceilings create wide open spaces illuminated by skylights above. Indoor/outdoor see through fireplaces blend inside and outside living.

Chef's kitchens feature premium stainless steel gourmet appliances like Wolf® Gas Ranges and Double Wall Ovens, and Blomberg® refrigerators. Radiant hot water in-floor heating keeps the space cozy from the living room to the bedroom. Smart home technology puts full control of your home at the touch of a finger.



CHEF'S KITCHEN *with*
A GOURMET APPLIANCE COLLECTION



SWEEPING MOUNTAIN AND CITY *from*
OVER-HEIGHT WINDOWS



CHEF'S KITCHEN WITH 30" WOLF® SELF *cleaning* DOUBLE WALL OVEN.

SIDE-BY-SIDE BLOMBERG® REFRIGERATORS WITH BOTTOM *mount* FREEZER AND INTEGRATED NATURAL PANELING.



CUSTOM DOUBLE VANITY WITH DUAL *sinks*,
OPEN TOWEL STORAGE AND MOTION
ACTIVATED UNDER COUNTER LIGHTING

DEEP SOAKER FREE-STANDING TUB *with*
MATTE BLACK DECK MOUNTED AQUABRASS
FAUCET AND HAND SHOWER.





The following is a selection of our floor plans, more are available by scheduling an appointment with our Presentation Centre:

Bellewood Park Presentation Centre
778 265 3464

1010 Fort Street,
Victoria, BC V8V 3K4

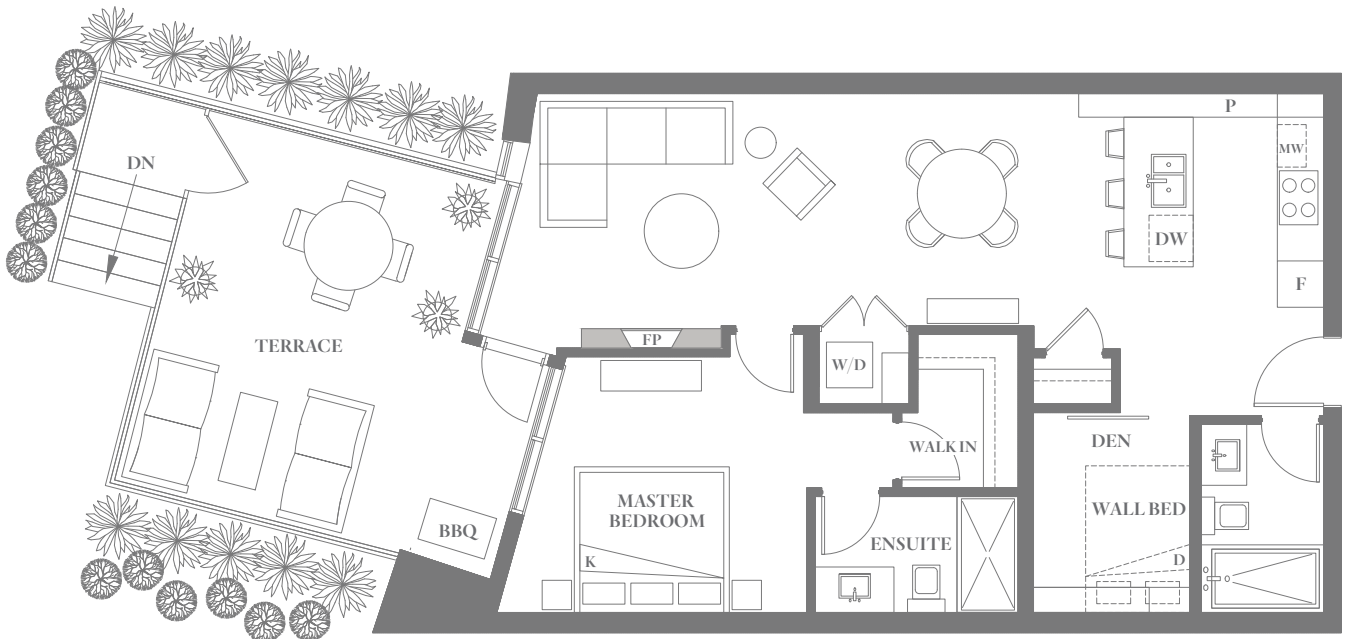
info@bellewoodpark.com



Oaks

Six storey concrete construction offering
Premium Residences, Sub Penthouses and Penthouses.

BELLEWOOD PARK

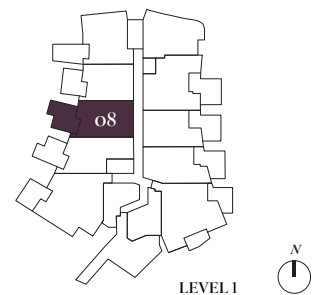


B₃

OAKS

JR 2 Bedroom, 2 Bath

Living – 826 sf | Exterior – 258 sf | Total – 1,084 sf



BELLEWOOD PARK



C2

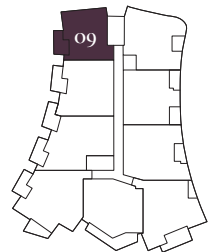
OAKS

2 Bedroom, 2 Bath

Living – 896-908 sf | Exterior – 161 sf | Total – 1,057-1,069 sf



LEVEL 2/3



LEVEL 4



BELLEWOOD PARK

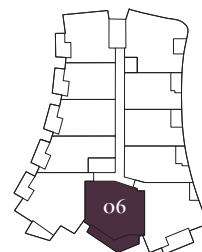


D7

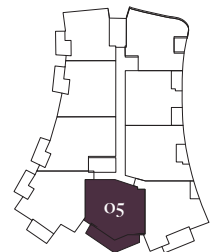
OAKS

2 Bedroom, 2 Bath + Den

Living - 1,177 sf | Exterior - 258 sf | Total - 1,435 sf



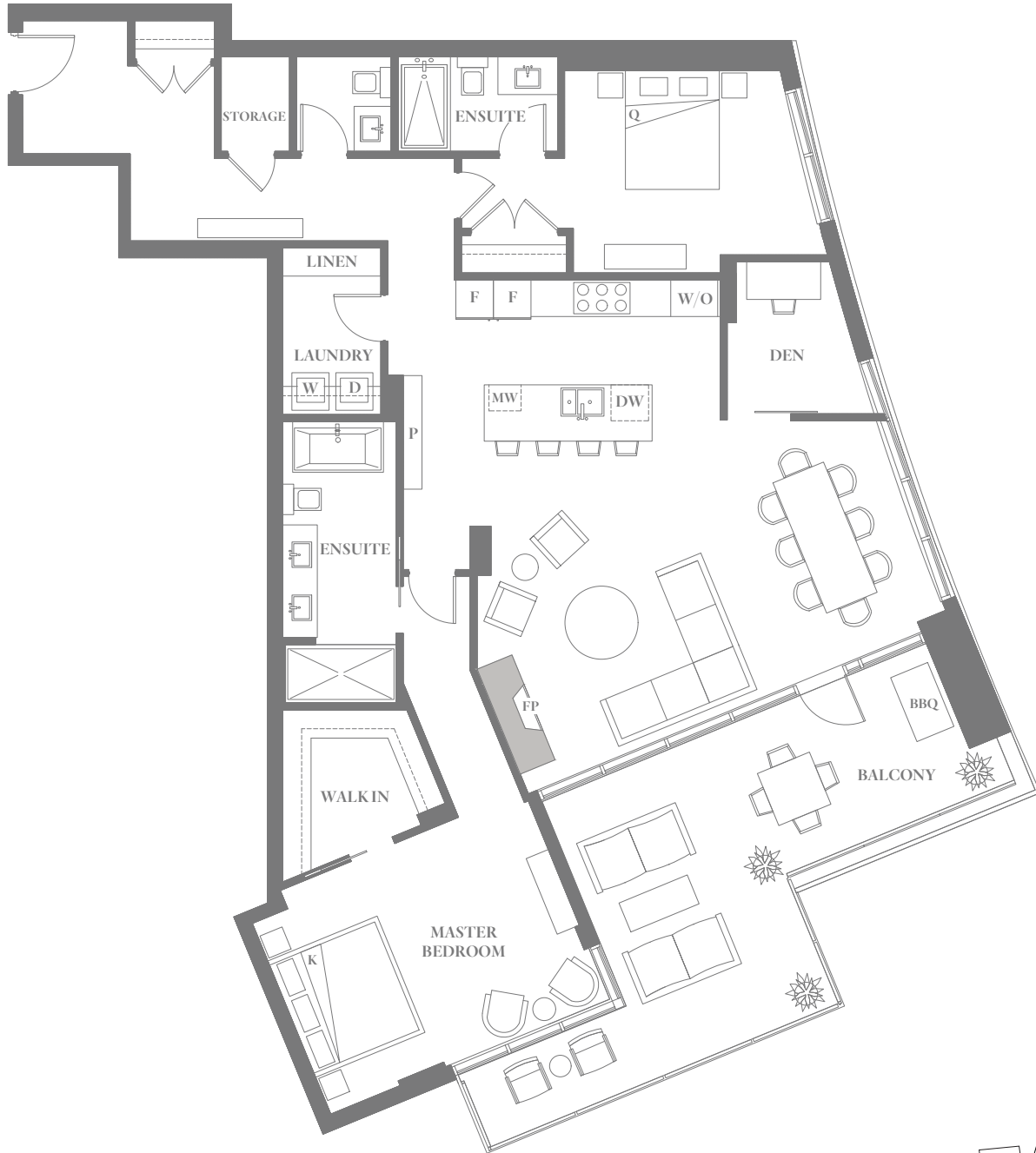
LEVEL 2/3



LEVEL 4



BELLEWOOD PARK

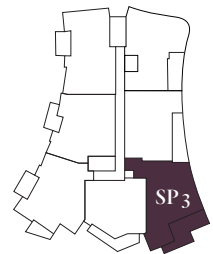


SP3

OAKS

2 Bedroom, 2.5 Bath + Den

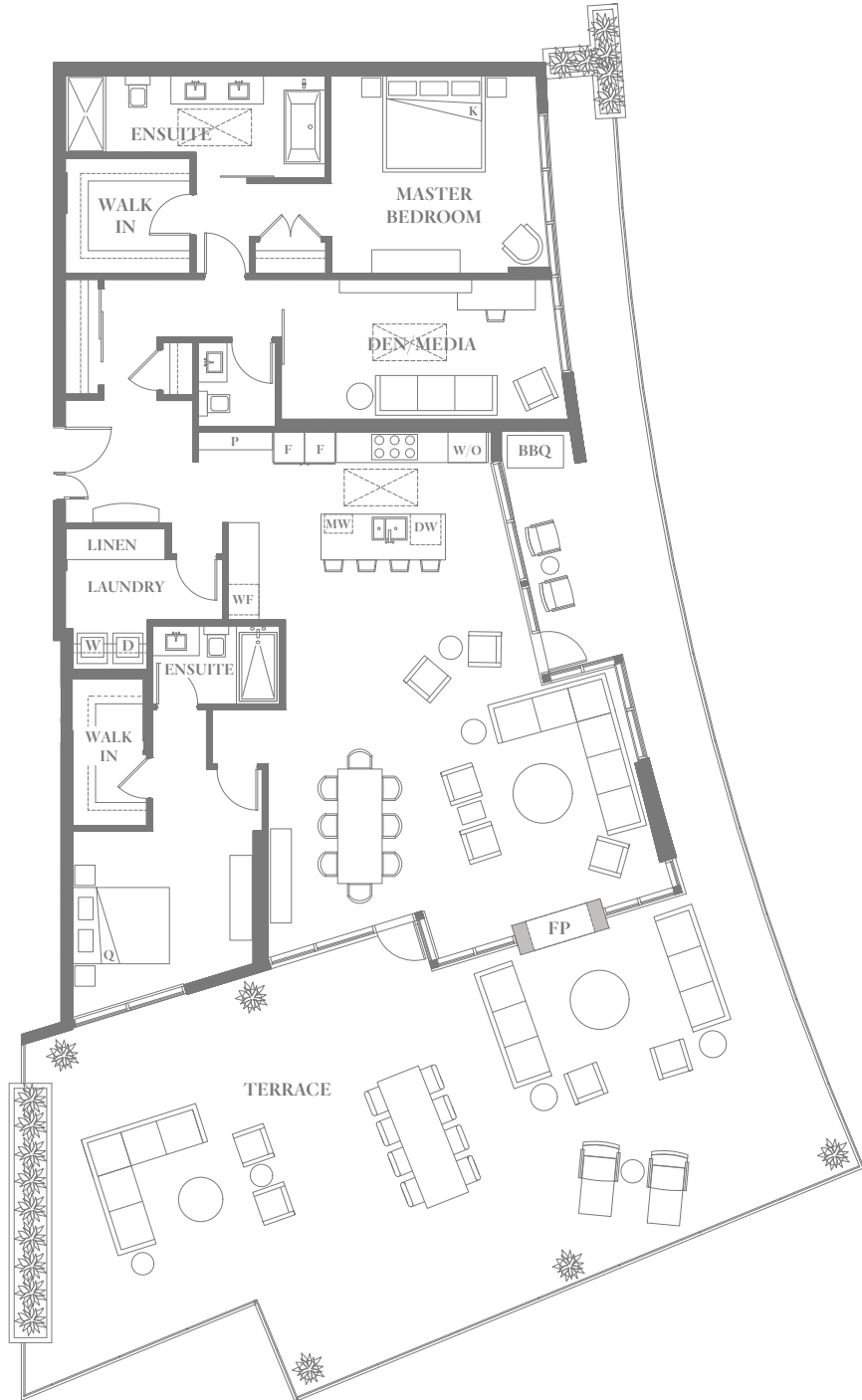
Living - 1,566 sf | Exterior - 355 sf | Total - 1,921 sf



LEVEL 5



BELLEWOOD PARK

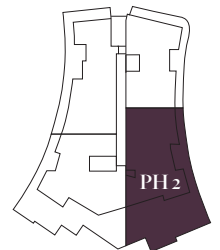


PH₂

OAKS

2 Bedroom, 2.5 Bath + Den

Living - 1,928 sf | Exterior - 1,528 sf | Total - 3,456 sf



LEVEL 6

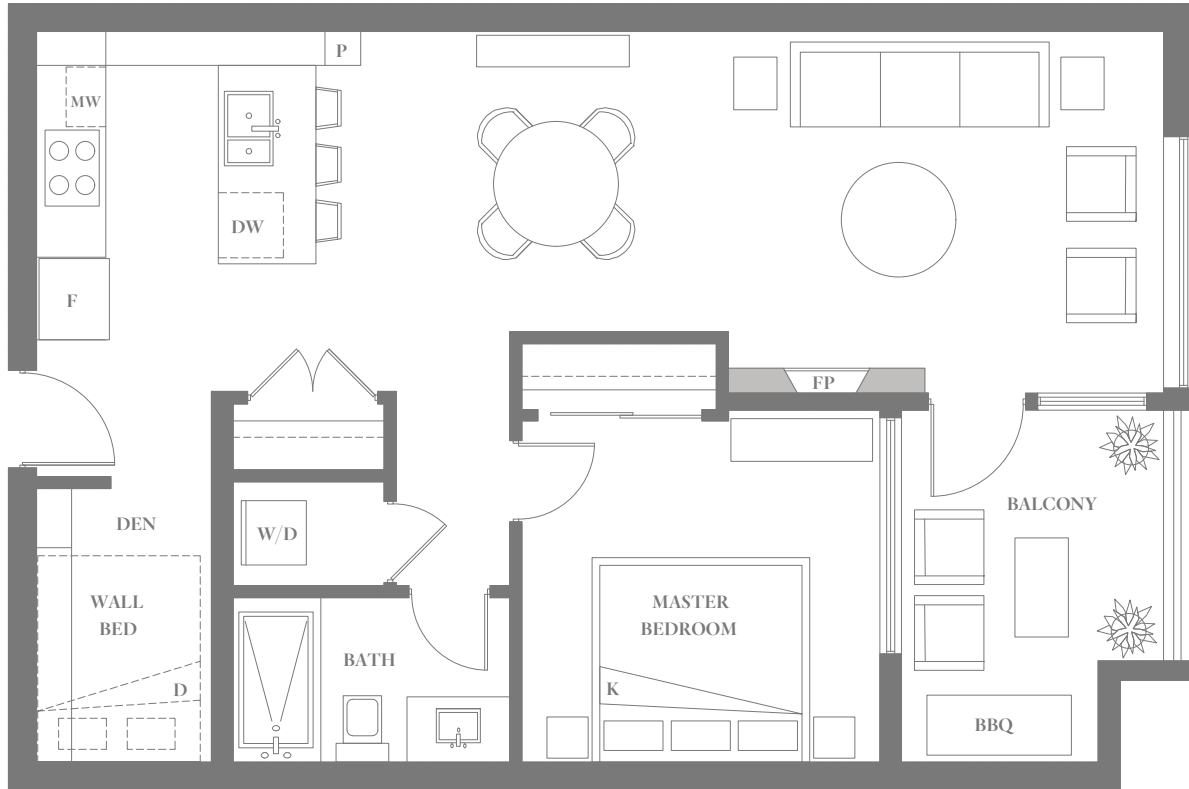




Cypress

Four storey leading-edge woodframe construction offering
Premium Residences and Penthouses.

BELLEWOOD PARK

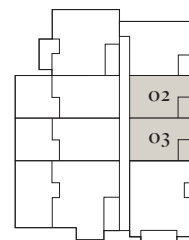


A4

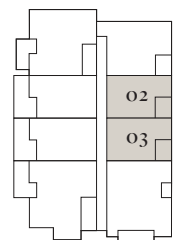
CYPRESS

1 Bedroom, 1 Bath + Den

Living – 722 sf | Exterior – 97 sf | Total – 819 sf



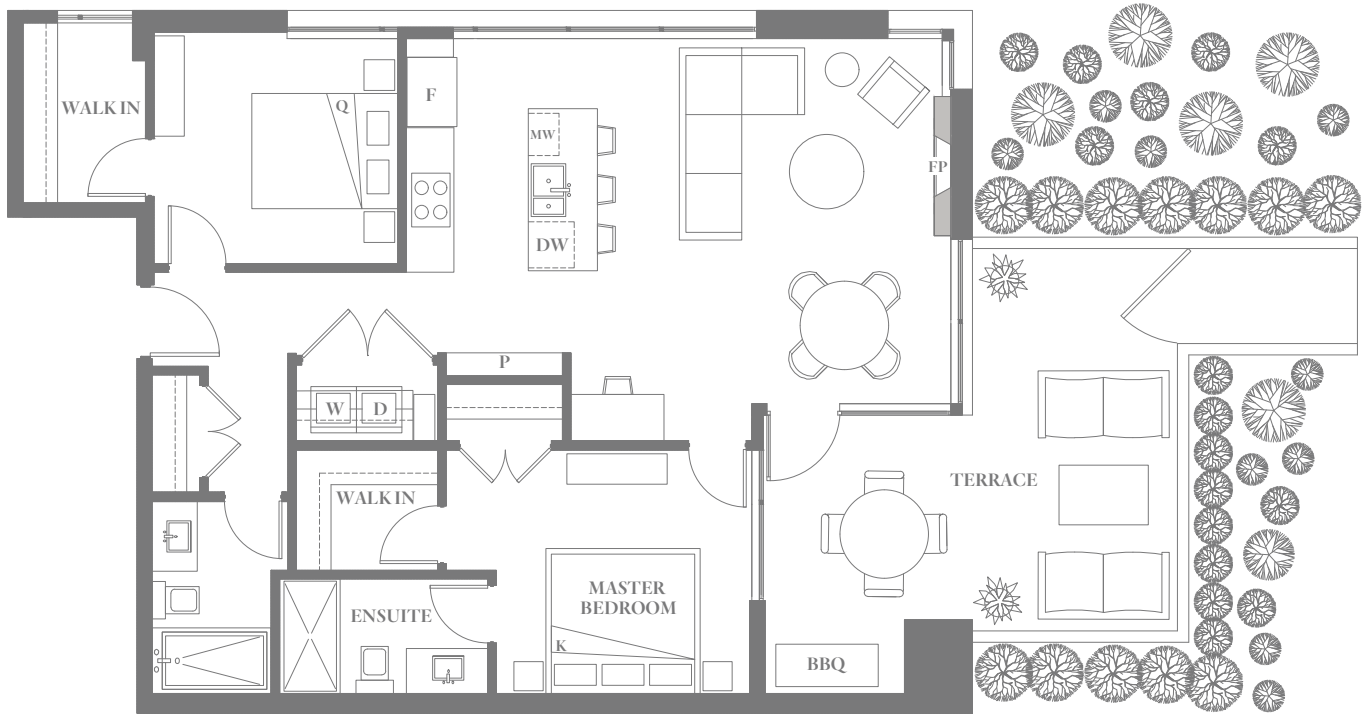
LEVEL 2



LEVEL 3



BELLEWOOD PARK

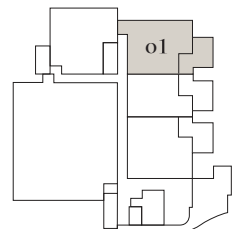


C₃

CYPRESS

2 Bedroom, 2 Bath

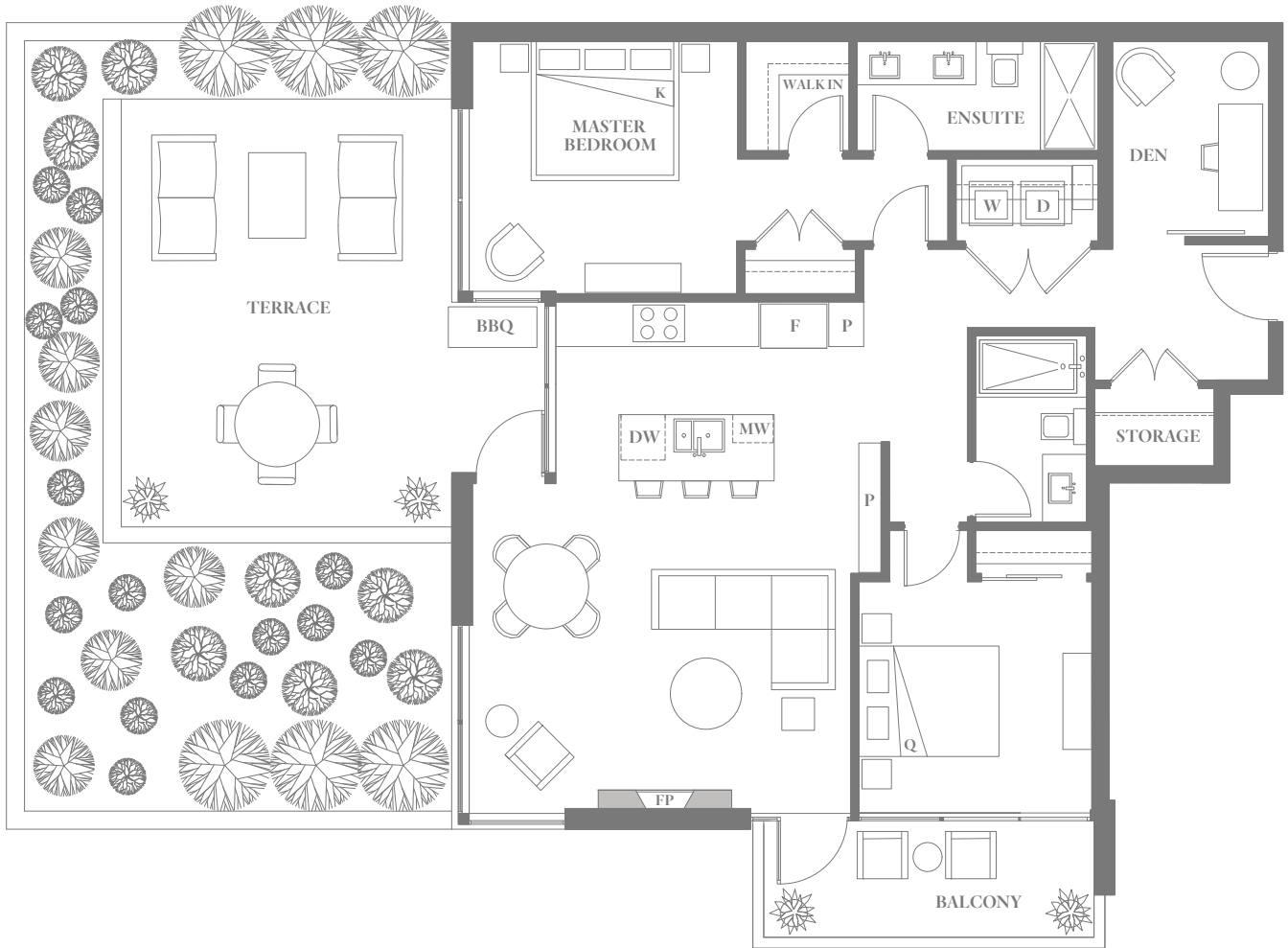
Living – 1,003 sf | Exterior – 269 sf | Total – 1,272 sf



LEVEL 1



BELLEWOOD PARK

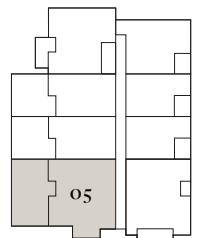


D14

CYPRESS

2 Bedroom, 2 Bath + Den

Living – 1,168 sf | Exterior – 667 sf | Total – 1,835 sf



LEVEL 2





NINE UNIQUE CUSTOM HOMES *to*
TO SUIT YOUR TASTE

Townhomes at Bellewood Park

Nine highly-customizable townhomes encompass traditional architecture true to the neighbourhood's rich history.

Coming June 2018



Abstract Developments doesn't just construct homes, we help build communities. Our meticulous, time-tested development process spans years—from the initial concept through to completion and is driven by personal engagement with a variety of stakeholders to design meaningful residences that contribute to the local community.

Since 1999, Abstract has built more than 275 single and multi-family homes in neighbourhoods across Greater Victoria.

Creating iconic spaces



Cascadia Architects was formed in 2012 by Principal Architects Gregory Damant and Peter Johannknecht. The firm's identity and character is rooted in their combined 40 years of practice with respected and award-winning firms in Victoria, Vancouver and Germany.

Cascadia Architects is interested in working in new ways—collaborating across traditional professional boundaries to assist their clients in identifying and realizing their aspirations and the best results for their projects.



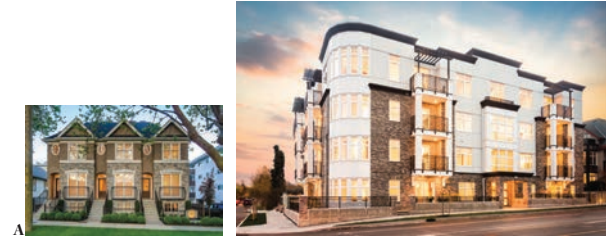
Nygaard Interior Design is an interior design firm headed by lead designer Sandy Nygaard. Sandy Nygaard brings over 20 years of design experience to the firm. Her keen eye for design and modern aesthetic has built her a strong reputation for both her residential and commercial work, and she has been regularly featured in publications.



Murdoch de Greeff Inc. was formed by Scott Murdoch and Paul de Greeff in 2007. Their planning and design approach is based on the notion that a thorough understanding of a site's natural opportunities and constraints is the cornerstone to logical and sustainable solutions.



Zebra Design is a leader in forward thinking, award-winning home designs that stand the test of time. Principal designer Rus Collins brings over 35 years of residential design experience and his staff of skilled building technologists to every project. Responding to the needs of each client with careful attention to detail, Zebra delivers innovative and creative design solutions, with excellence as a priority.



A : BROWNSTONE
6 HOMES

B : MADDISON
22 HOMES

C : VILLAGE WALK
22 HOMES

D : BLACK AND WHITE
75 HOMES

E : TERRA VERDE
16 HOMES

F : BOWKER
43 HOMES



Bellewood Park Presentation Centre
778 265 3464

1010 Fort Street,
Victoria, BC V8V 3K4

bellewoodpark.com

